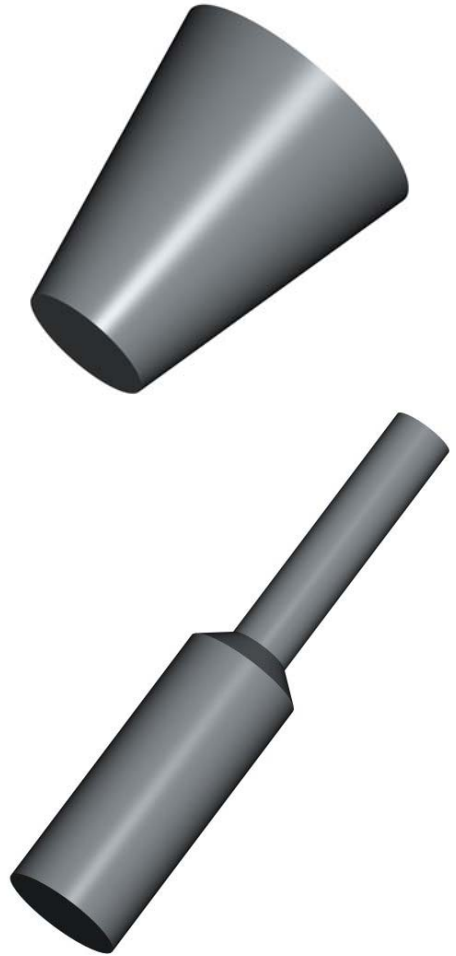




# *Hol-Masks™*

Tapered & Pull Thru  
Masking Plugs





## Hol-Masks™

Tapered  
Masking Plugs



Low-cost, easy-application protection for holes, threads, counter bores, etc. in the process of Electroplating, Anodizing, Dipping, Painting, De-burring, etc.

Precision Associates' Hol-Masks™ are molded in a specially developed high-strength EPDM compound that is resistant to all plating solutions, high temperature, etc. as are normally encountered in the finishing industry. Although this low cost permits just one time use, they can be re-used many times.

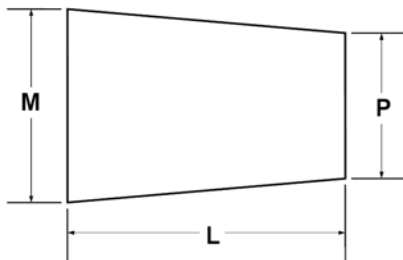
For specialty applications, such as extreme heat, special chemicals, or other unusual circumstances, PAI can mold these sizes in one of our other 900+ compounds. Contact us for help determining the compound suitable for you special need.

The tables on these two pages contain our standard stock sizes. Sometimes unique problems can be solved with a custom shape masking device. Please contact our engineering department for help with your special design. Our in-house tooling facility can quickly produce a mold to your specifications.

### Tapered Hol-Masks™ for Bottomed Holes

Size	M	P	L
915-112	.112	.046	.465
915-125	.125	.031	.650
915-135	.135	.085	.386
915-160	.160	.100	.390
915-200	.200	.115	.475
915-188	.215	.118	.375
915-250	.250	.060	.500
915-249	.250	.063	.750
915-251	.250	.125	.530
915-313	.313	.187	.530
915-314*	.314	.187	1.030
915-370	.370	.260	.730
915-430	.430	.320	.730

Size	M	P	L
915-570*	.570	.381	1.500
915-750	.750	.375	.875
915-1.188	1.188	.812	1.000
915-1.615	1.615	1.300	1.000
915-1.626	1.625	1.125	1.120
915-1.625	1.625	1.125	1.120
915-2.086	2.086	1.775	1.030
915-2.137	2.137	2.072	1.500
915-2.250	2.250	1.950	1.000
915-2.570	2.570	2.070	1.030
915-2.610	2.610	2.300	1.000
915-3.070	3.070	2.440	1.375
915-4.188	4.188	3.500	1.500



\*Indicates that the Hol-Mask has a tag on the (M) end to aid installation and removal.

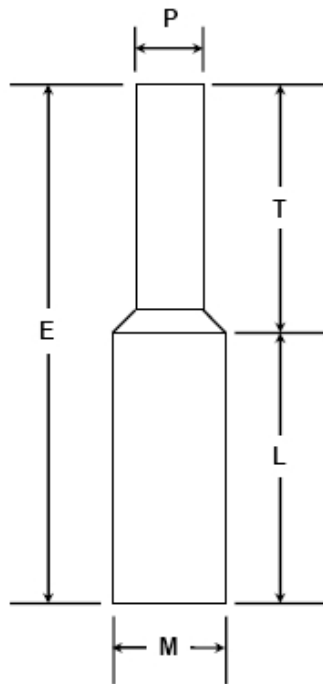


# Hol-Masks™

Pull-Thru  
Masking Plugs



## Pull-Thru Hol-Masks™ for Through Holes



Size	M	P	L	T	E
927-055	.055	.035	.563	.563	1.125
927-060	.060	.035	.563	.563	1.125
927-069	.067	.047	.625	.625	1.250
927-090	.090	.062	.875	.875	1.750
927-093	.091	.062	.625	.625	1.250
927-107	.104	.062	.625	.625	1.250
927-105	.105	.075	.875	.875	1.750
927-125	.121	.062	.625	.625	1.250
927-137	.137	.110	.875	.875	1.750
927-145	.145	.095	.250	.370	.620
927-150	.150	.120	1.125	1.125	2.250
927-157	.154	.091	.375	.375	.750
927-166	.162	.093	.625	.625	1.250
927-181	.181	.125	1.000	1.000	2.000
927-195	.195	.110	.625	.625	1.250
927-225	.225	.125	.625	.625	1.250
927-226	.226	.125	1.324	1.464	2.788
927-250	.245	.193	.500	.500	1.000
927-260	.257	.130	.625	.625	1.250
927-284	.287	.160	1.150	1.150	2.300
927-312	.310	.147	.625	.625	1.250
927-335	.335	.157	.625	.625	1.250
927-370	.370	.250	1.150	1.438	2.588
927-388	.388	.157	.625	.625	1.250
927-414	.414	.157	.625	.625	1.250
927-441	.440	.200	.875	.875	2.000
927-445	.445	.157	.625	.625	1.250
927-496	.496	.187	.625	.625	1.250
927-510	.510	.187	.625	.625	1.250
927-620	.620	.250	.875	.875	1.750
927-751	.750	.375	.950	1.062	2.012
927-765	.765	.200	.625	.625	1.250



3800 North Washington Ave.  
Minneapolis, MN 55412-2142

Toll Free: **1-800-394-6590**

**612-333-7464**

Sales: **612-334-9190**

FAX: **612-342-2417**

*[info@PrecisionAssoc.com](mailto:info@PrecisionAssoc.com)*

Ask us about our complete line of product literature:

- *Standard O-Rings*
- *Special Size O-Rings*
- *U-Cups*
- *V-Rings*
- *Rod Wipers*
- *X-Rings*
- *8-Rings™*
- *Multiseal® Low Friction Seals*
- *Kurv-Bak™ Hard Rubber Backup Rings*
- *Rubber Balls*
- *Medical Seals*
- *Custom Moldings*

**After 56 years in the rubber business, we've learned to be flexible. We'll bend over backwards to design custom solutions that meet your needs *precisely*. PAI is the company you can trust for rubber seal solutions YOUR WAY!**

- **Over 1,000 different compounds**
- **More than 2,300 O-Ring Sizes**
- **On-Site Mold Shop**
- **Custom Molding**
- **99% on-time delivery**
- **ISO 14644-1 Class 7 Clean Room**